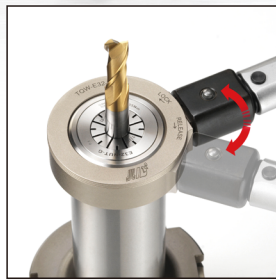
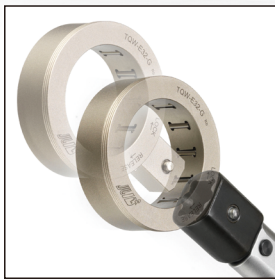
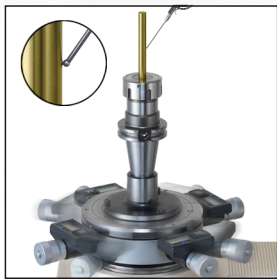




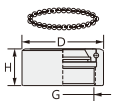
強力螺帽 ER II Powerful Nut

Reduce twisting of the collet and increase T.I.R. accuracy.
Improve chucking consistency by 6 times compared to non bearing style nut!
Smooth Nut prevents coolant flare and provides better balance.

減少筒夾的扭曲並增加 T.I.R. 準確性。
與沒有軸承滾珠螺帽相比提高6倍夾持力！
防止冷卻劑附著以及提供更好的動平衡。



Our ground eccentric bearing race makes set up extremely easy, and ensures the accurate concentric placement of the collet.
We control all of our manufacturing processes, thereby maintaining the assembly accuracy tolerances between the nut, collet, and holder.
Our ground eccentric bearing race increases clamping power by 100% compared to standard nuts! It also prevents galling and twisting between the collet angle contact surface and the nut to minimize runout and greatly assist in alignment of the collet to the holder.



高速平衡滾珠螺帽 BEARING NUT

MODEL NO	D	H	G	Kg	Fig
ER16-AY-US	32	17	M22xP1.5	55Nm	
ER20-AY-US	35	19	M25xP1.5	80Nm	
ER25-AY-US	42	20	M32xP1.5	100Nm	
ER32-AY-US	50	23	M40xP1.5	135Nm	
ER40-AY-US	62	25	M50xP1.5	170Nm	

高速平衡滾珠螺帽-全圓 BEARING SMOOTH NUT

MODEL NO	D	H	G	Kg	Fig
ER16-AY-USG	32	17	M22xP1.5	55Nm	
ER20-AY-USG	35	19	M25xP1.5	80Nm	
ER25-AY-USG	42	20	M32xP1.5	100Nm	
ER32-AY-USG	50	23	M40xP1.5	135Nm	
ER40-AY-USG	62	25	M50xP1.5	170Nm	

快換式扭力扳手
TORQUE WRENCH
ATTACHMENT ADAPTOR

MODEL NO
TQW-HANDLE-14*18

快換式全圓滾珠扭力扳手頭
BEARING SMOOTH NUT
WRENCH ATTACHMENT

MODEL NO
TQW-ER16-G
TQW-ER20-G
TQW-ER25-G
TQW-ER32-G
TQW-ER40-G

我們的研磨偏心軸承座圈使設定變得極其簡單，並且確保精確的同心位置。
我們控制所有的製造過程，在螺帽、筒夾和刀柄之間保持裝配精度公差。
我們的研磨偏心軸承座圈夾持力與一般螺帽相比，增加 100% 防止筒夾與螺帽接觸的表面之間的磨損和變形，減少跳動並大大幫助對準筒夾到刀柄的距離。

益鋌企業有限公司 ITINE ENTERPRISE CO., LTD.

42076 台中市豐原區豐原大道四段500號
No.500, Sec. 4, Fongyuan Blvd., Fongyuan Dist.,
Taichung City 42076, Taiwan
TEL: 886-4-25155000 FAX: 886-4-25153636
E-mail: itine.itine@msa.hinet.net



本公司通過
ISO 9001 : 2008
國際認證